

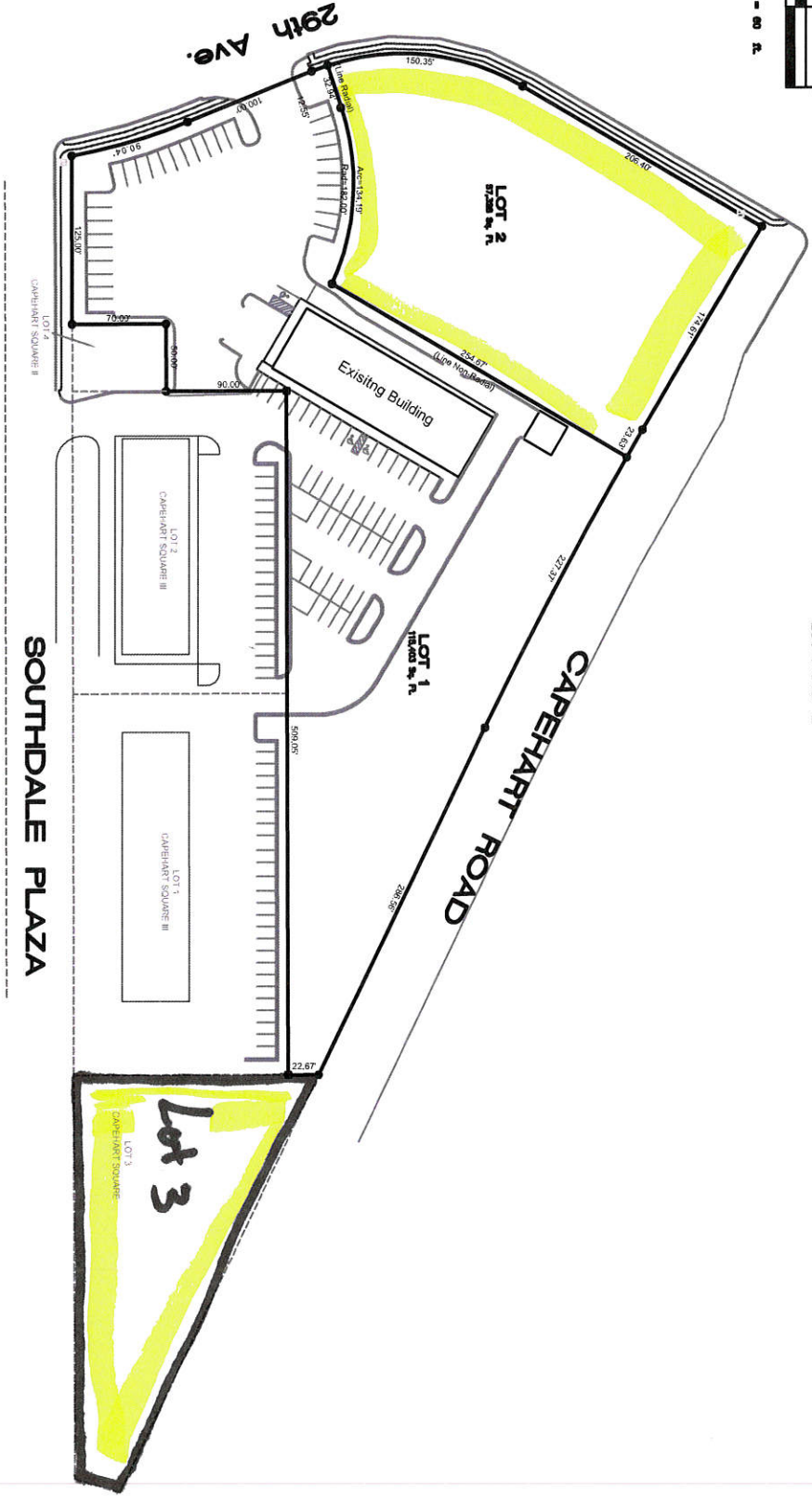


1 Inch = 60 Ft.



CAPEHART SQUARE REPLAT V

BEING A REPLAT OF LOT 1 AND LOT 2, CAPEHART SQUARE REPLAT IV,
 SE 1/4 OF SEC. 4, T35N, R15E OF THE 6th P.M.,
 SHERIDAN COUNTY, NEBRASKA.
 LOT 1 and 2



© 2008 Hill-Farrell Associates, Inc.
 This plat was prepared by the undersigned
 on the basis of a survey conducted by
 the undersigned and is subject to the
 provisions of the Uniform Land Use
 Planning Act, Nebraska, and the
 provisions of the Uniform Platting
 Act, Nebraska.



HILL-FARRELL ASSOCIATES, INC.
 Architects • Engineers • Surveyors
 1820 Hillcrest Drive Bellevue, NE 68005 (402) 291-6100

CAPEHART SQUARE REPLAT V
ADMINISTRATIVE SUBDIVISION

DATE: 08/14/08
 SHEET NO. 1 OF 1